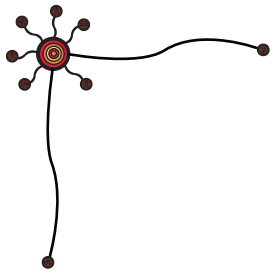


ENTERING WORDS INTO THE EDITOR

Summary of the Features of the Editor Screen

Entering Language Via the Editor Screen For The First Time



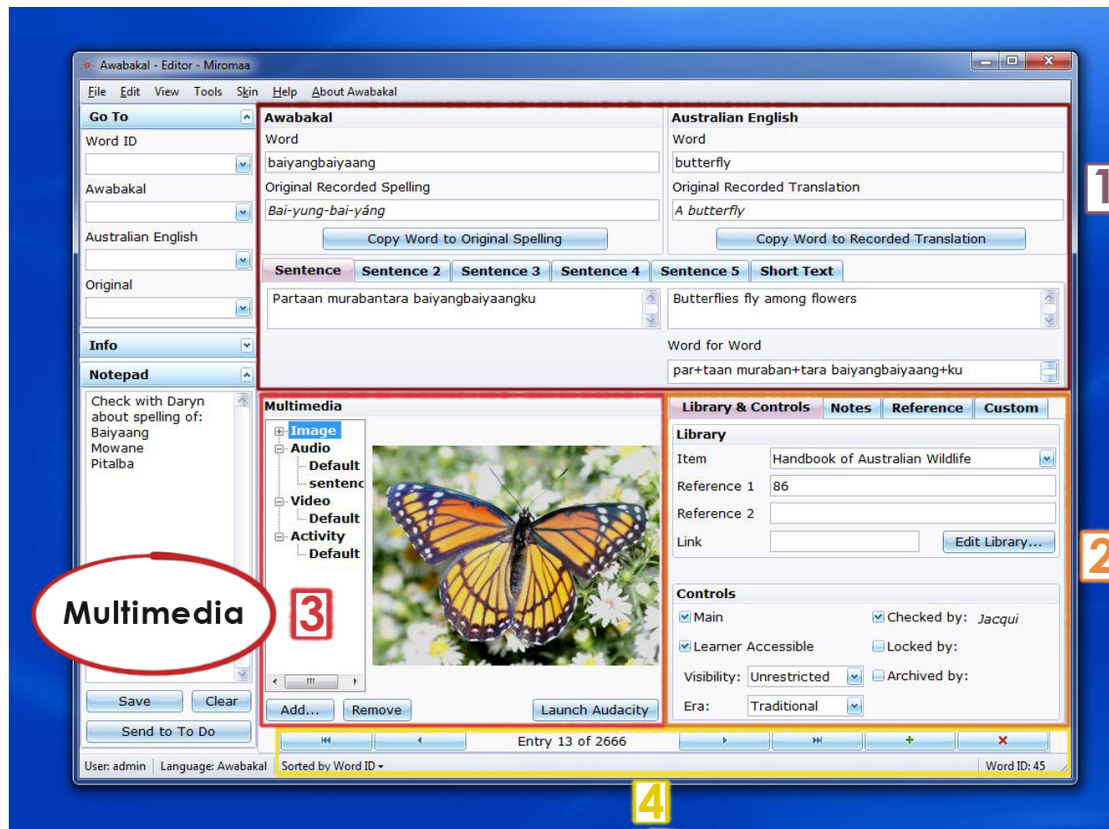


Contents

Entering Words Into The Editor	1
Summary of the Features of the Editor Screen	2
Entering Language Via the Editor Screen For The First Time	3

Entering Words Into The Editor

The Editor is where you will do most of your work in Miromaa. You will get to know this screen very well!

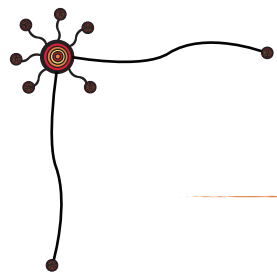


1 Key Information

2 Library, Control, Knowledge Classification

3 Multimedia

4 Navigation



Summary of the Features of the Editor

This is a re-cap of the summary of the features of the Editor, that you will use to enter words.

All of these featured are described in detail in *The Editor Tour* chapter.

1. Key Information

This is where you enter:

- Words and sentences
- Their translation

2. Library, Controls, Knowledge and Classification

In this section are the:

- 2a - Library Panel - here you can attribute your entry to the source from your library
- 2b - Control Panel - control access to each individual word according to protocols and permissions, as well as decide on it's inclusion in exports
- 2c - Notes Panel - enter cultural knowledge, extra information and linguistic information
- 2d - References Panel - enter grammatical tagging and assign word category
- 2e - Custom Fields Panel - add your own categories

3. Multimedia

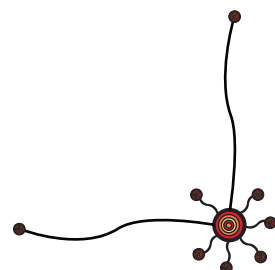
Here you can:

- Attach images, audio, videos and activities
- Record audio by connecting with Audacity. See the *Working with Audacity* chapter for more information
- Move position of connected multimedia
- Rename connected multimedia

4. Navigation

In this area you can:

- Add entries (+)
- Delete entries (x)
- Navigate through entries one at a time (<) and (>)
- Navigate to the first or last of your words (<<) and (>>)
- Find out the ID number of each word
- View username of user currently connected
- View connected database
- 'Sort By' feature

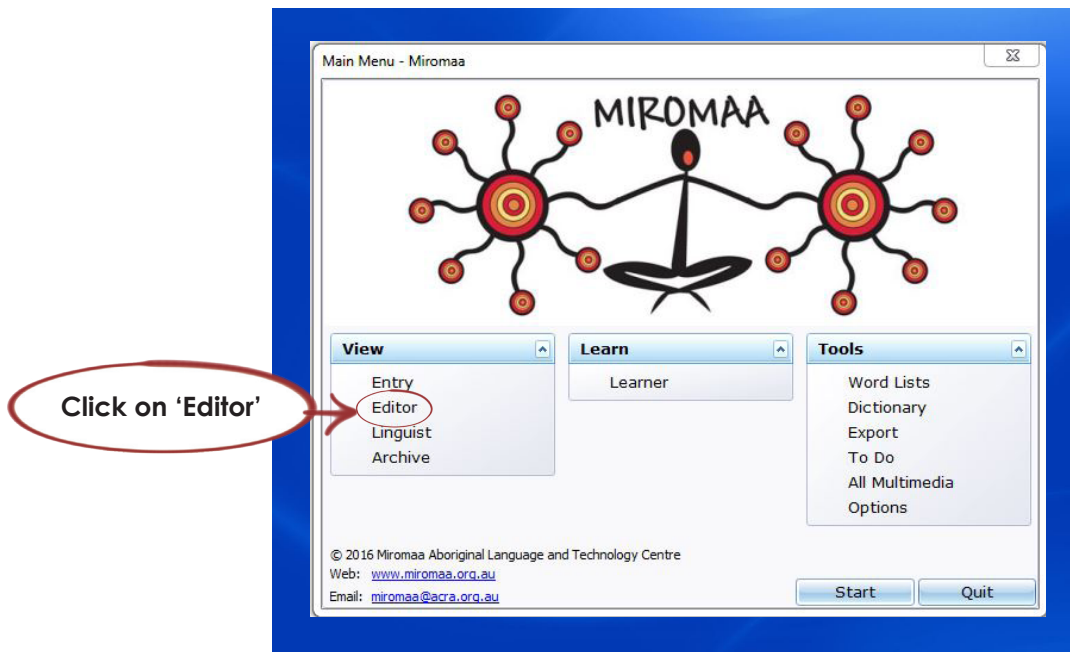


Entering Language Via the Editor For The First Time

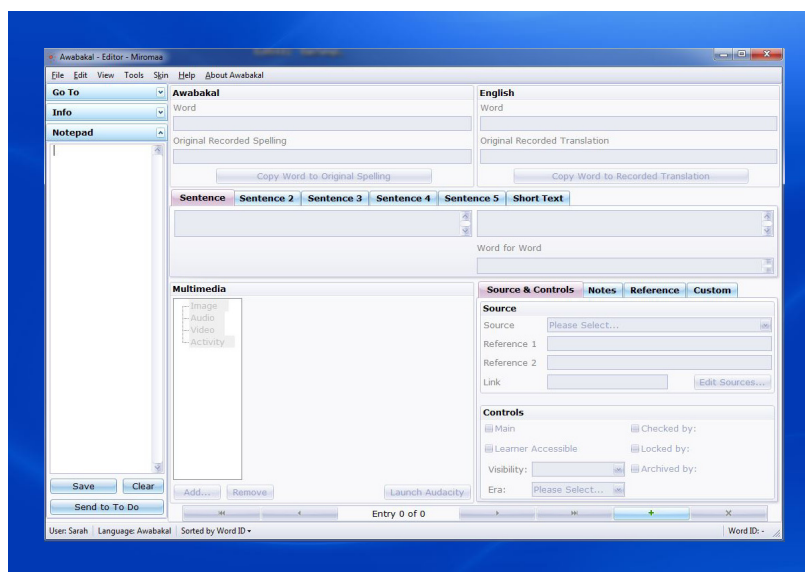
You are now ready to start entering language!

Once you have logged into Miromaa you will be greeted by the Main Menu:

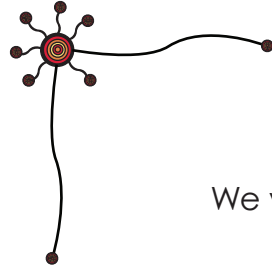
a. Click on 'Editor'



This will bring you to the Editor, your screen should look like this, you can't enter a word yet, the fields are greyed out.



We will now take you through entering your first word in Miromaa in the *Key Information* chapter.



We would love to hear your feedback on Miromaa so please don't hesitate to tell us about your experiences:

Miromaa Aboriginal Language & Technology Centre

Suite 1
50 Bolton Street,
Newcastle. NSW. 2300.
Phone: +61 2 4927 8222
miromaa@acra.org.au
www.miromaa.org.au

Remote Support

If you would like further help we can assist by providing support by email or by using our remote support software TeamViewer:

<http://miromaa.org.au/miromaa/support.html>

Miromaa Learning Room

The most recent version of this, and all of our training documents will be available in the learning room.

<http://www.miromaa.org.au/miromaa/learning-centre/learning-room.html>

