

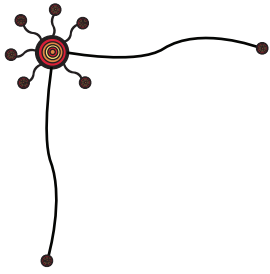
# CREATING YOUR FIRST LANGUAGE FILE

Creating Your Database

Miromaa Folder Structure

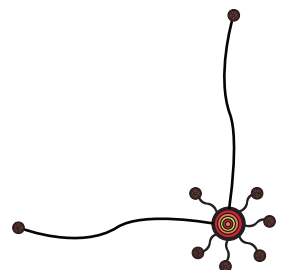
Logging In To Miromaa For The First Time





# Contents

Creating Your First Language File .....	1
This is the folder structure of Miromaa. ....	4
Logging Into Miromaa For The First Time .....	6



# Creating Your First Language File

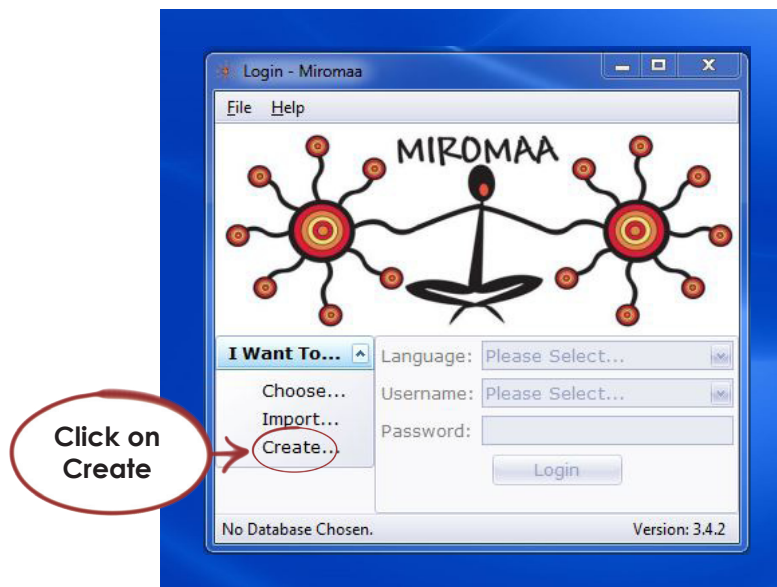
To open Miromaa for the first time (and every time after that):

**Double click** on the Miromaa icon that sits on your desktop

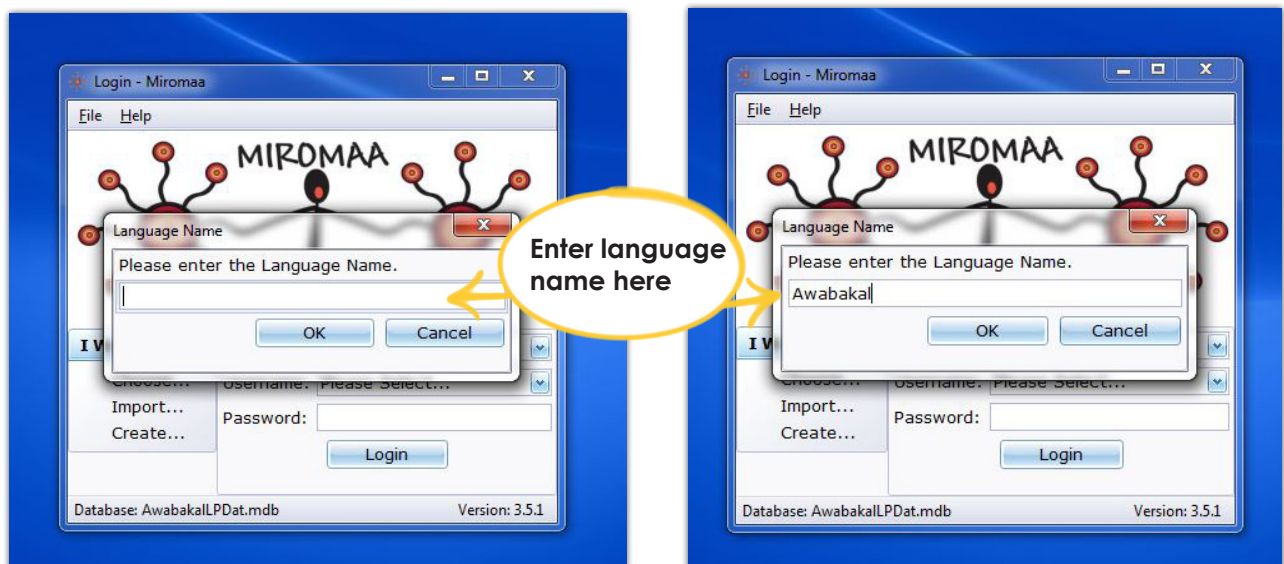


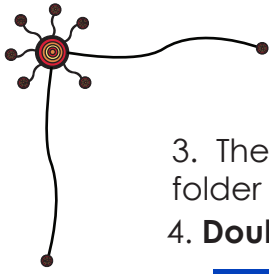
When you are greeted by the login screen:  
The first step to creating your language file is creating its database.

1. Choose **"I want to...Create"**

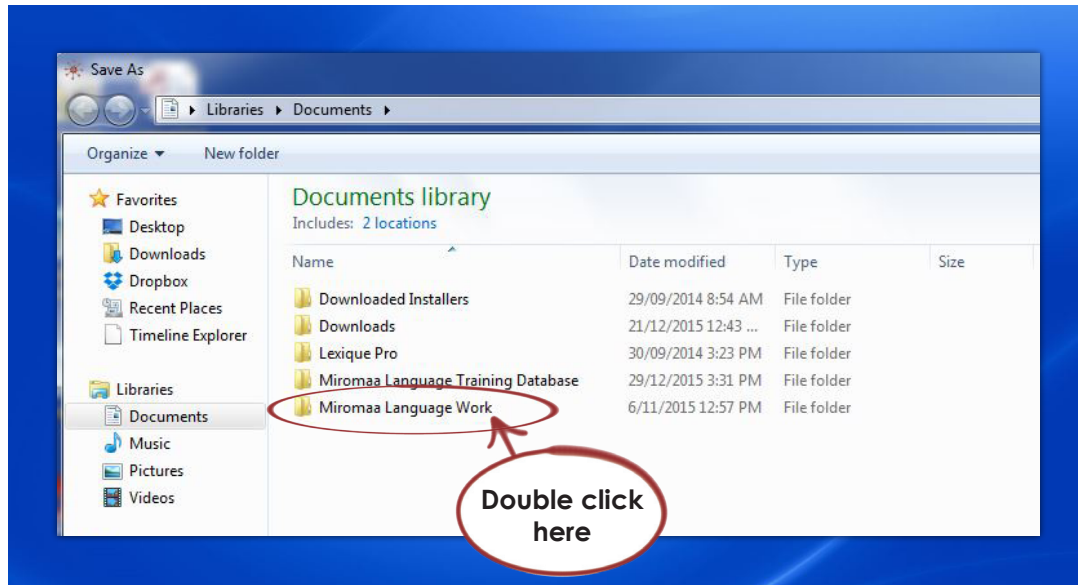


2. Enter **your language** name & **OK**

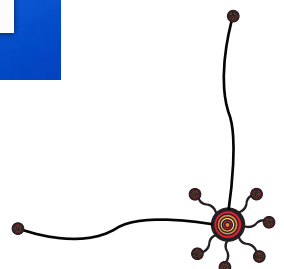
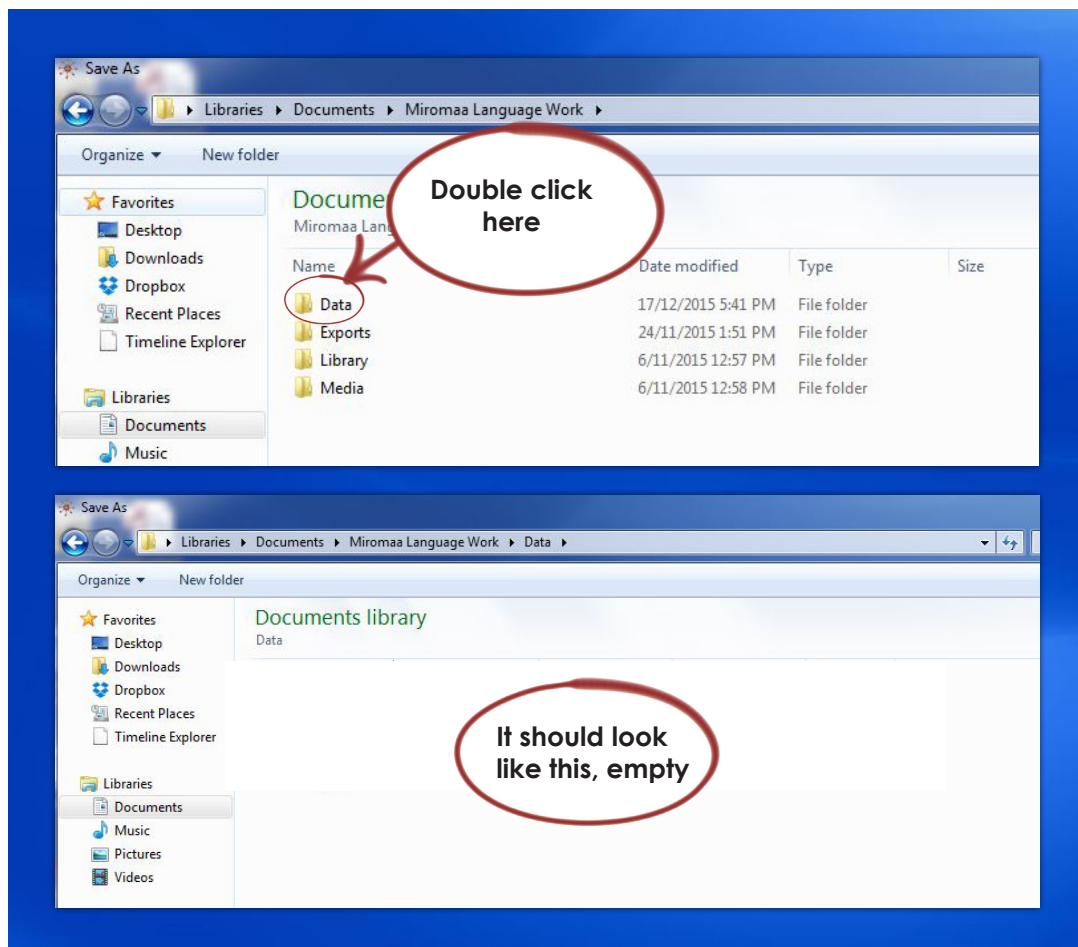


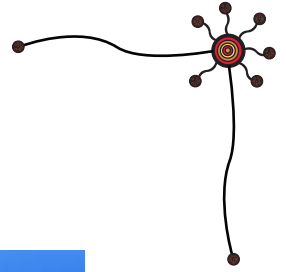


3. The File Explorer window will open. Navigate to your '**Miromaa Language Work**' folder
4. **Double click** on it to open it



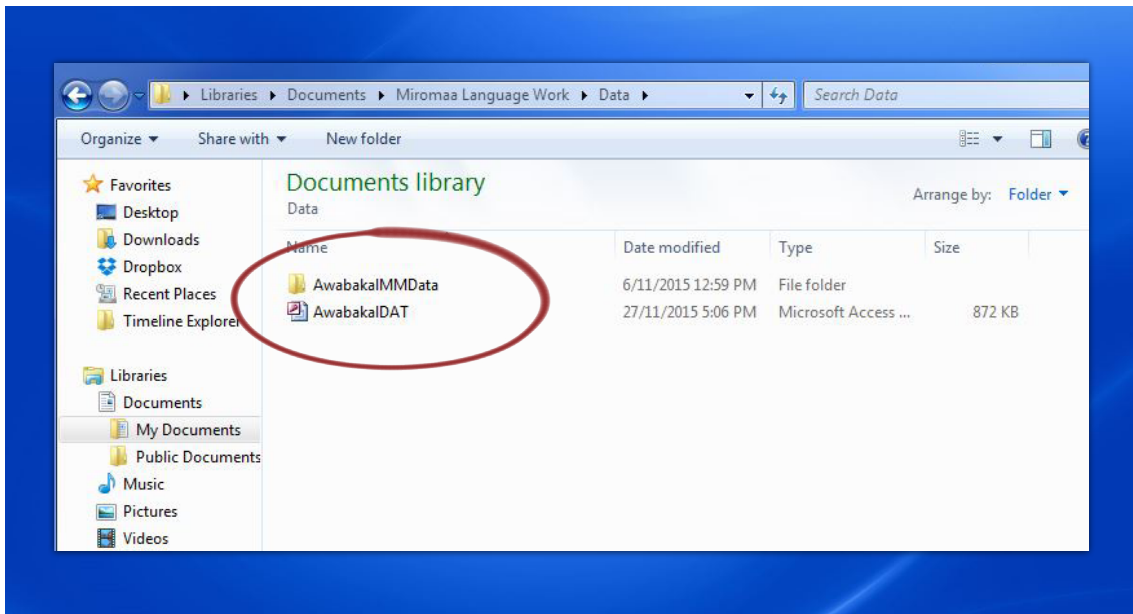
5. **Double click** on the '**Data**' folder inside it, so you are **inside** the '**Data**' folder





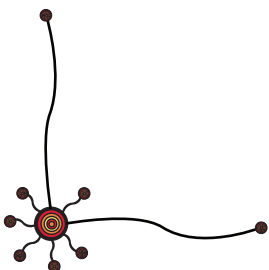
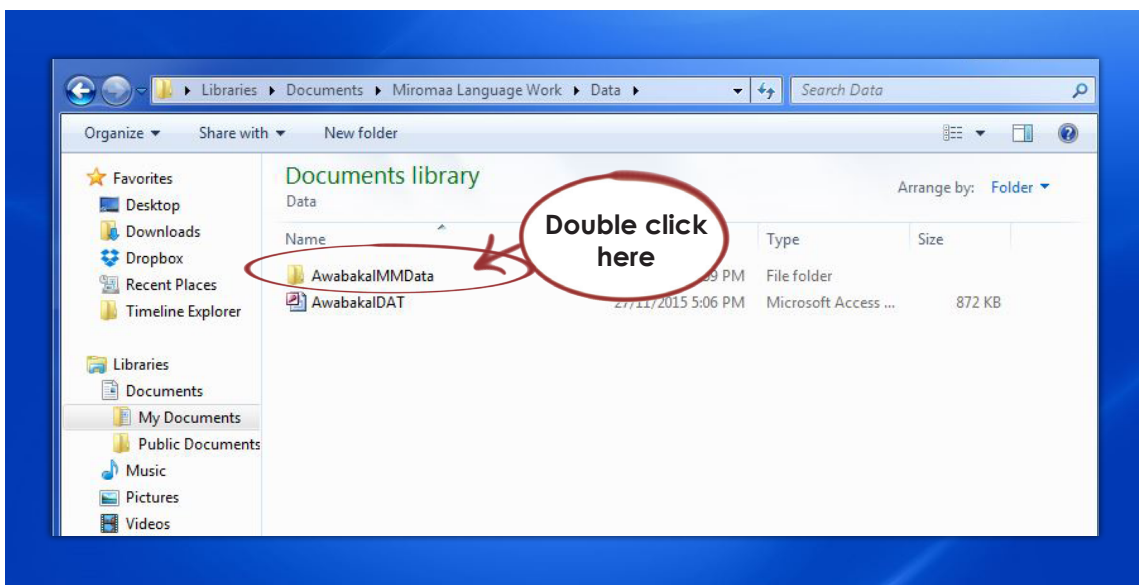
6. Click 'Save'

7. Miromaa will create a file and a folder inside the data folder.



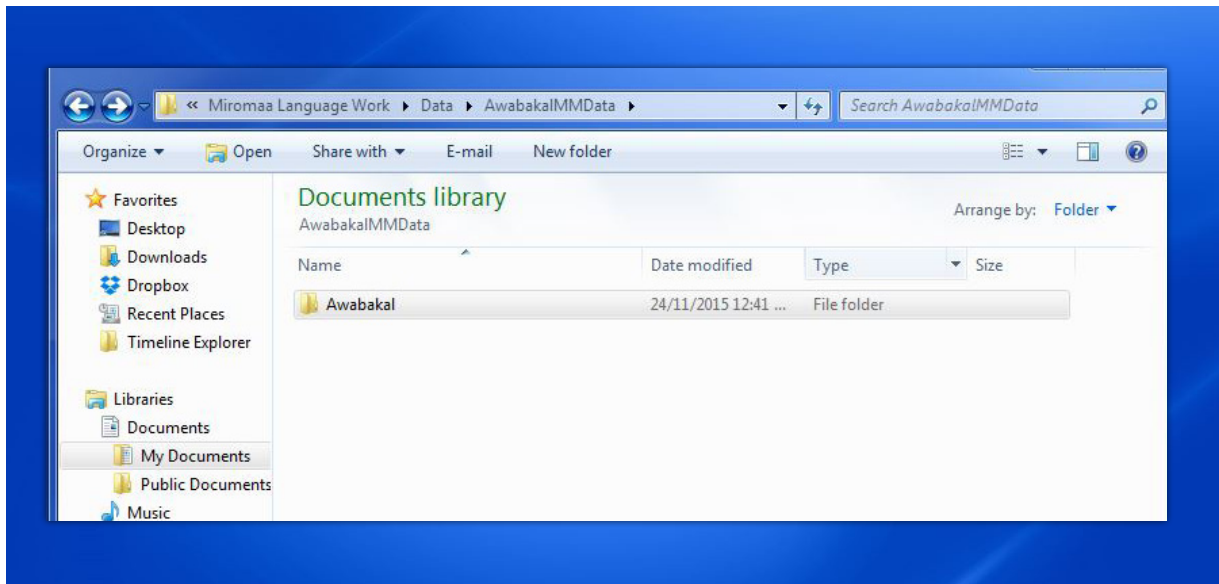
The file will be called yourlanguageDAT (e.g. AwabakalDAT) and the folder called yourlanguageMMDData (e.g. AwabakalMMDData). **These are the brains of Miromaa.**

8. **Double click** on the folder.



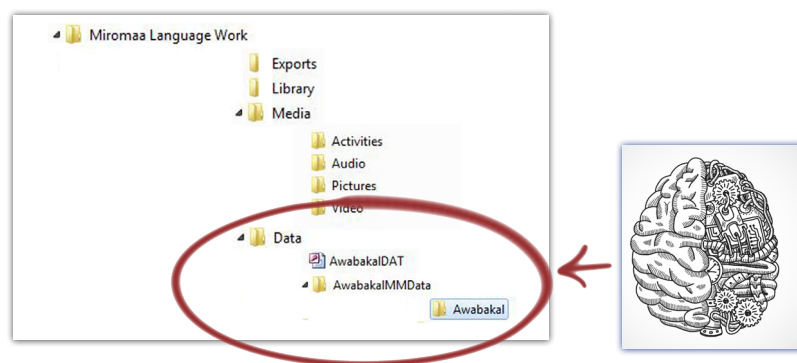


Inside will be another folder with the name of your language (e.g. Awabakal).  
**This folder is where Miromaa will archive copies of your library items and media.**

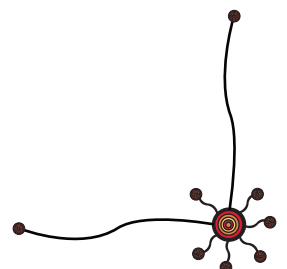


This is the folder structure of Miromaa.

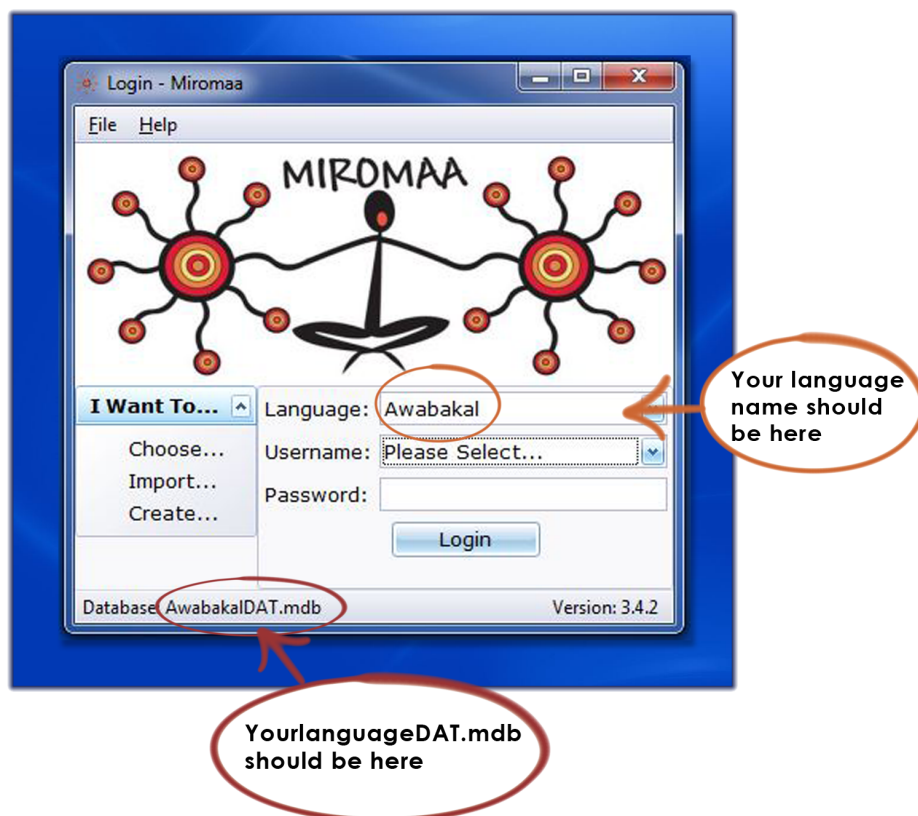
These circled folders work together as the brains and memory of Miromaa.



It is very important never to move, delete, change or rename these folders!



9. If you **go back to the login** screen it should now look like this:



Congratulations you are ready to log in to Miromaa for the first time!



# Logging Into Miromaa For The First Time

The first time you log in you will use the default Username: Admin and Password: Admin.

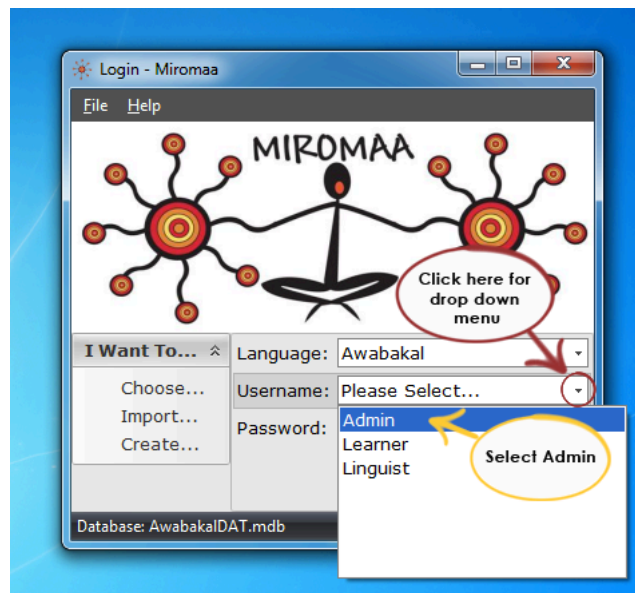


## Best Practice Tip:

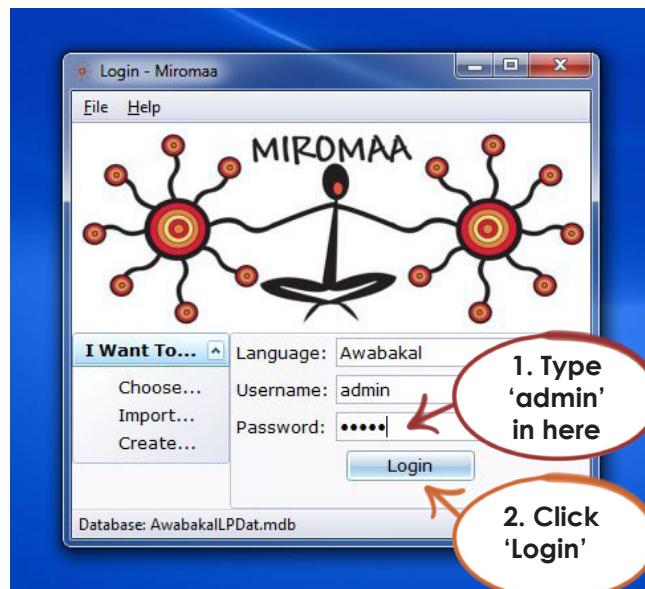
We recommend creating your own username and password immediately, and only using admin for your first login.

To log in for the first time:

1. **Click** on the **arrow** next to '**Please Select**' in the '**Username**' field a menu will drop down



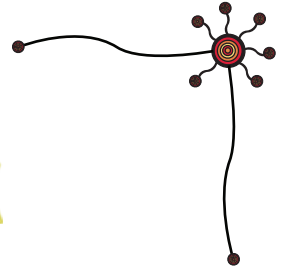
2. **Click** on '**Admin**'
3. In the '**Password**' field **click** in the space and **write** '**admin**'
4. **Click** '**Login**'



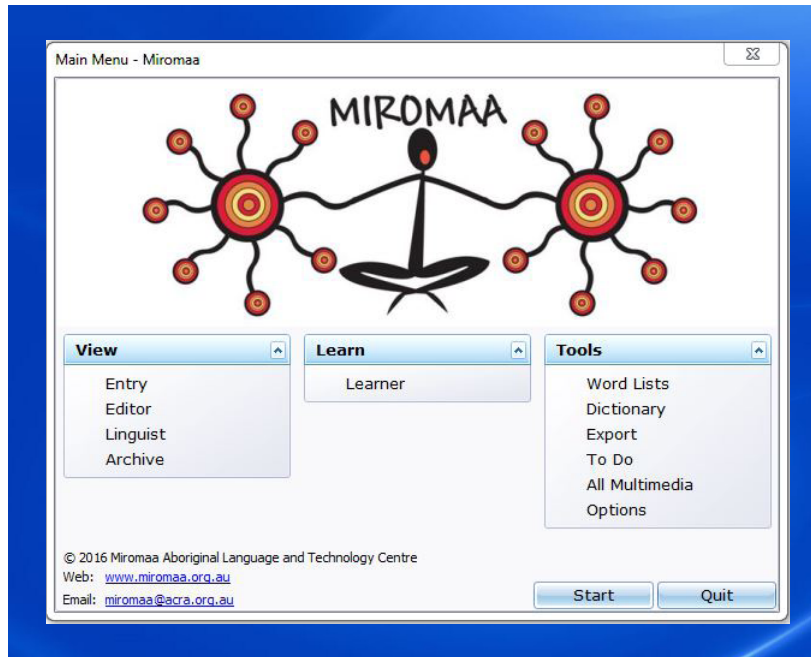




# WELCOME TO MIROMAA!



You will be greeted by the **Main Menu**, you will get to know this screen better in the *Main Menu Tour* chapter.



1. Your first username is 'Admin' (select the first on the list). The password is 'admin'.



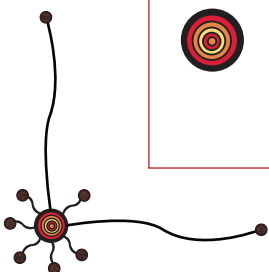
2. We recommend creating your own username and password immediately and creating separate usernames and passwords for each new user. See the chapter *Creating Your Username and Password*



3. It is important to make sure your database is connected before you begin each session. If it is not, please DON'T create another one, Please contact us using any of the methods listed on the following page



4. Your database file system holds all of your work. This is why your database is so important!



## This image shows a single sheet of white paper with horizontal ruling lines. The lines are evenly spaced and run across the width of the page. There are no margins, text, or other markings on the paper.

[illegible]

We would love to hear your feedback on Miromaa so please don't hesitate to tell us about your experiences:

## **Miromaa Aboriginal Language & Technology Centre**

Suite 1  
50 Bolton Street,  
Newcastle. NSW. 2300.  
Phone: +61 2 4927 8222  
miromaa@acra.org.au  
[www.miromaa.org.au](http://www.miromaa.org.au)

### **Remote Support**

If you would like further help we can assist by providing support by email or by using our remote support software TeamViewer:

<http://miromaa.org.au/miromaa/support.html>

### **Miromaa Learning Room**

The most recent version of this, and all of our training documents will be available in the learning room.

<http://www.miromaa.org.au/miromaa/learning-centre/learning-room.html>

